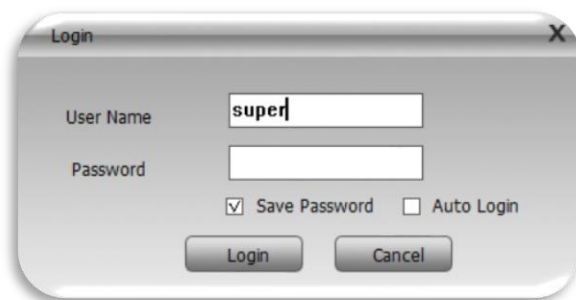


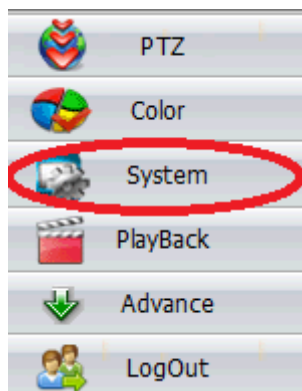
Adding a camera to CMS

This guide shows you how to view your Gardenature IP Camera on the CMS software found at gardenature.co.uk/advice This will allow you to view the IP address of your camera and allow you to view live and record directly on your PC.

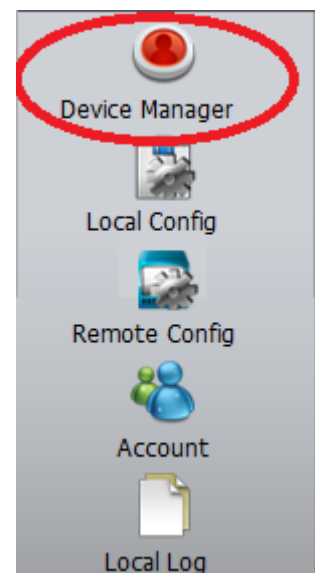
1. Log in to CMS.
Username: super
Password: (Leave Blank)



2. Select System.

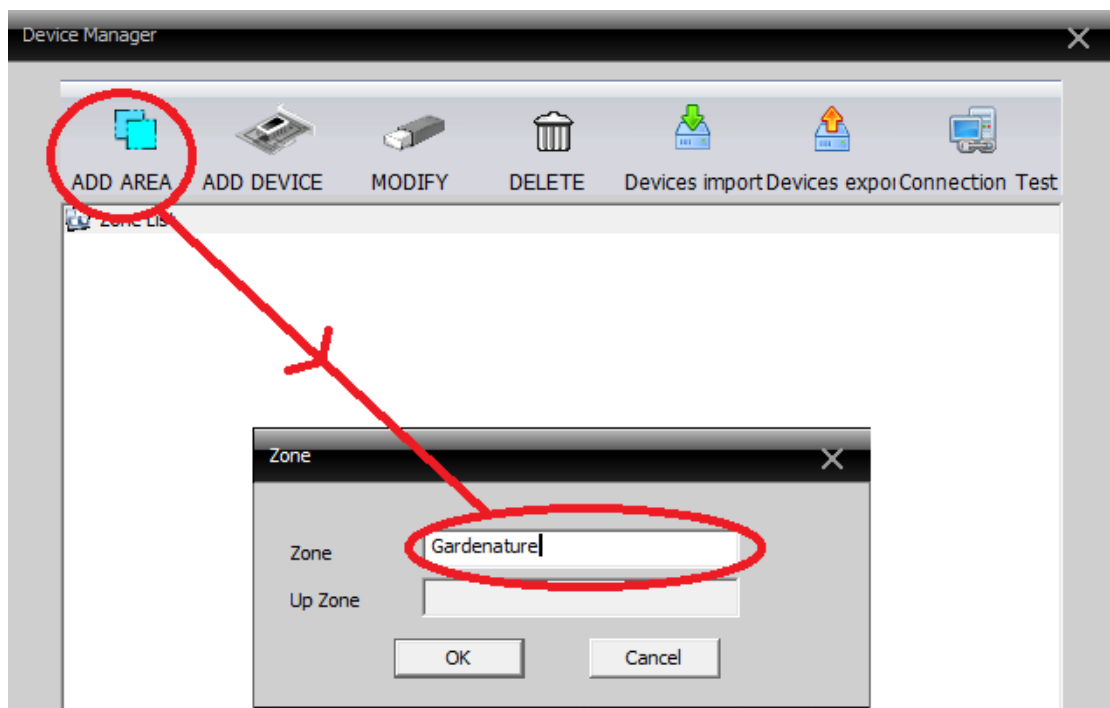


3. Select Device Manager.



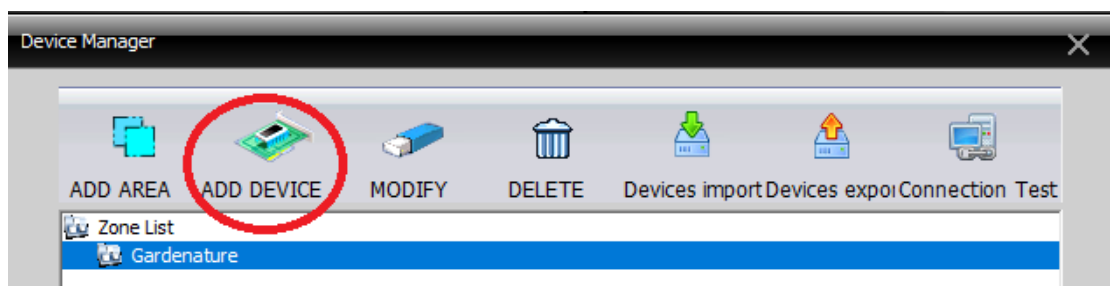
4. Add Area to your zone list.

This creates a zone for you to add the camera too. Once you select the zone list you can add a new area. In this example we named ours Gardenature. Click OK to save your zone.



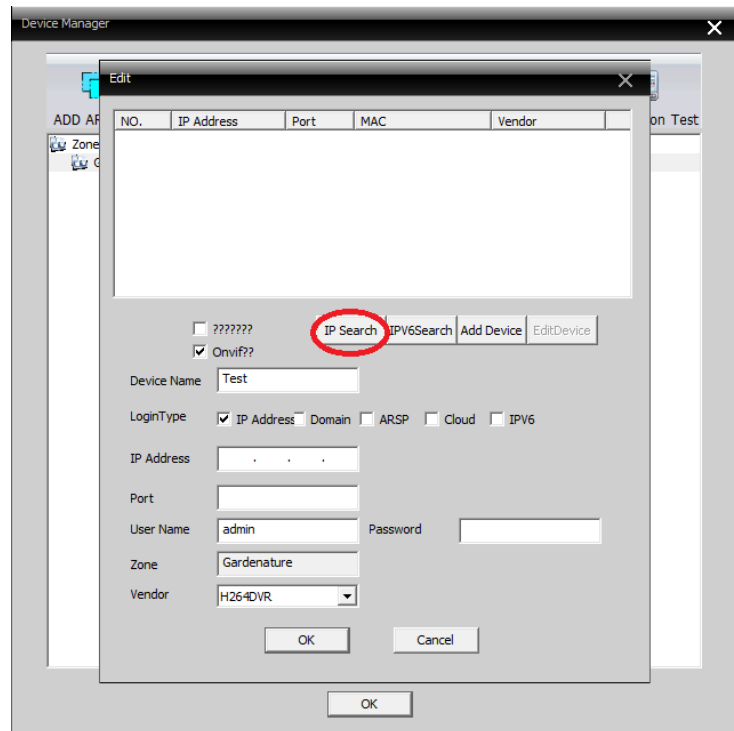
5. Add Device.

Now select the zone we just created and click Add Device.

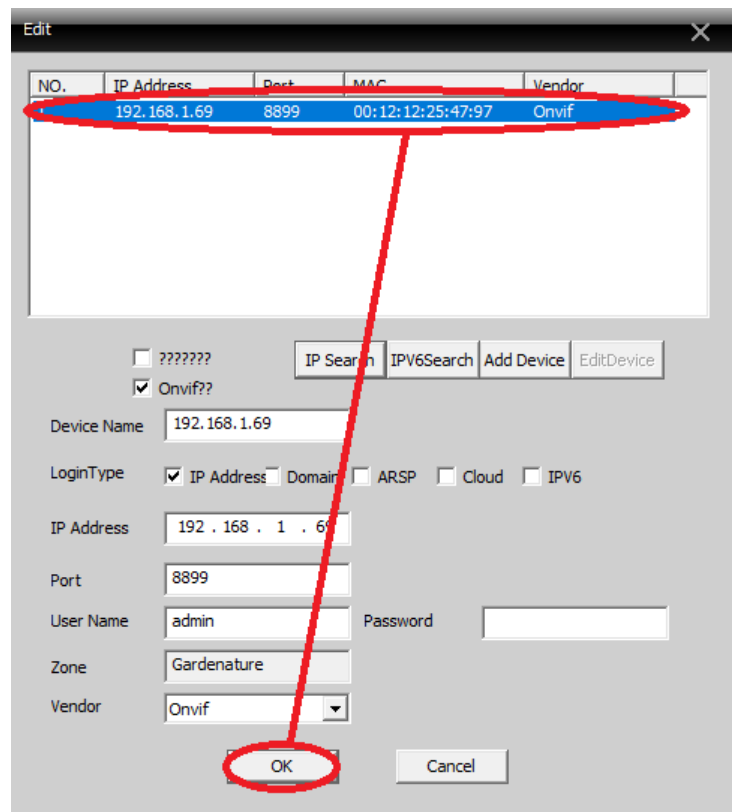


Note: At this point you need to make sure your camera is connected to your internet supply. You have two indicator lights on the weather proof connector to your camera. Ensure both lights are on
Blue light = Power. Green light = Data

6. Find your camera. Click the IP Search button and wait while CMS locates the camera on your network. (Make sure the Onvif section is ticked as we are looking for an onvif camera)



7. Saving your Camera. Once your camera appears in the list, select it and press OK to save it to your zone.



9. Viewing your Camera.

Click OK to close your Device Manager. Now double click the IP address of the camera we just added to view your camera live.

